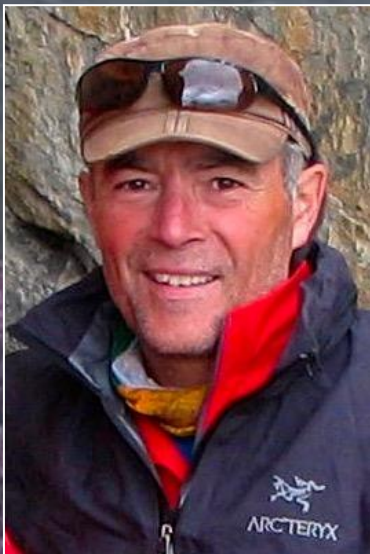


Navigating Pathways of Disaster Resilience in BC



Murray Journey

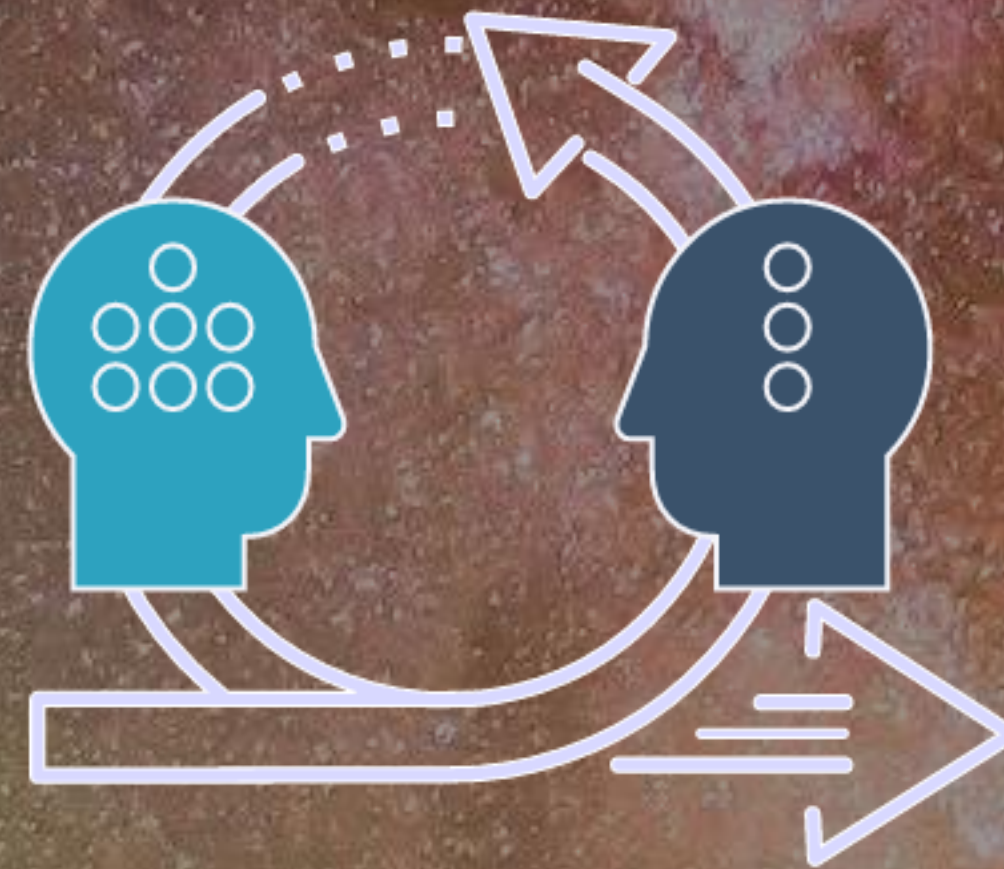


Tamsin Lyle

Disaster Resilience

balancing opportunity and liability

Earth Systems
*understanding changing
landscapes over time*

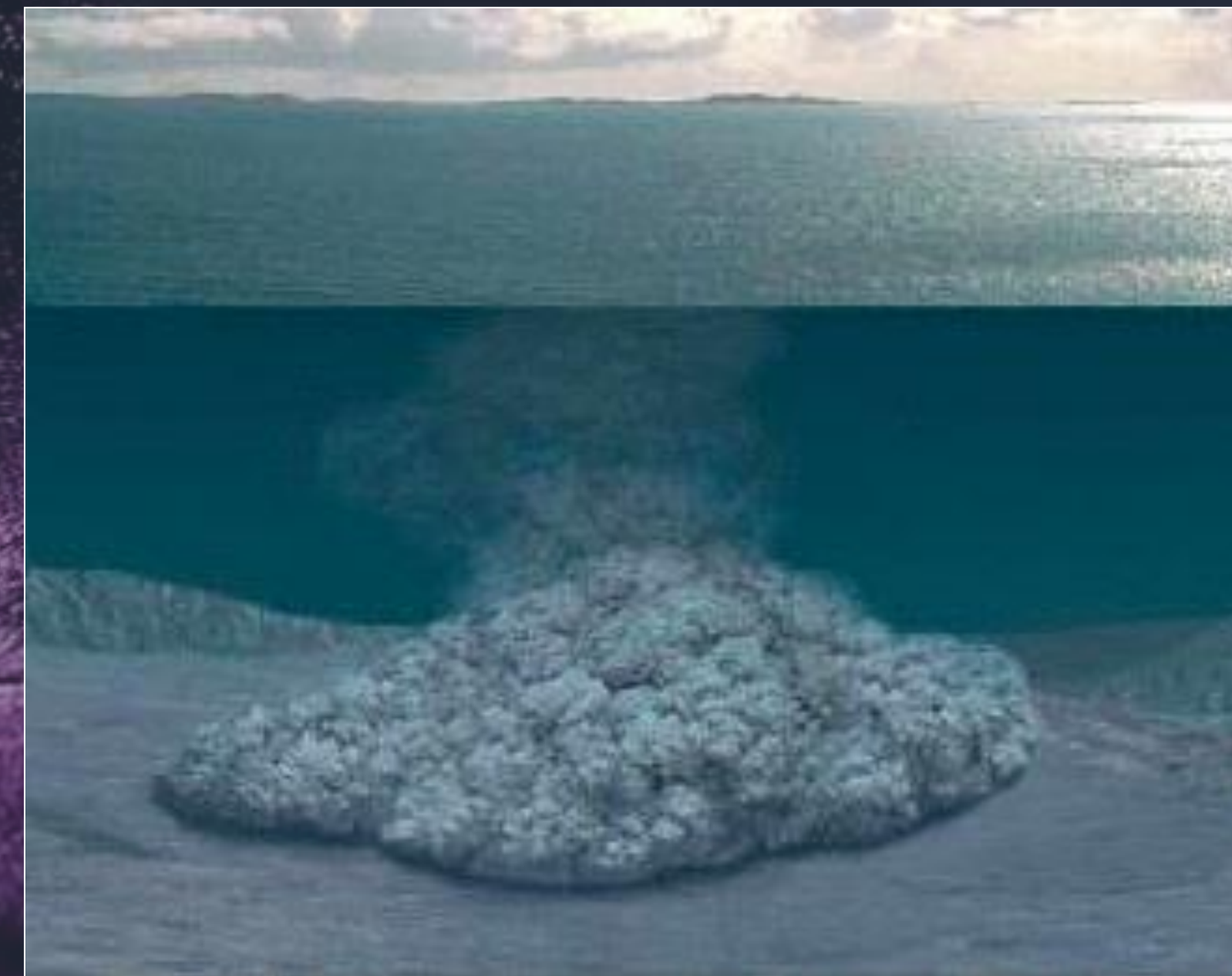


Sustainability
*planning for future
generations*

A Collective Memory of deep time and a dynamic landscape

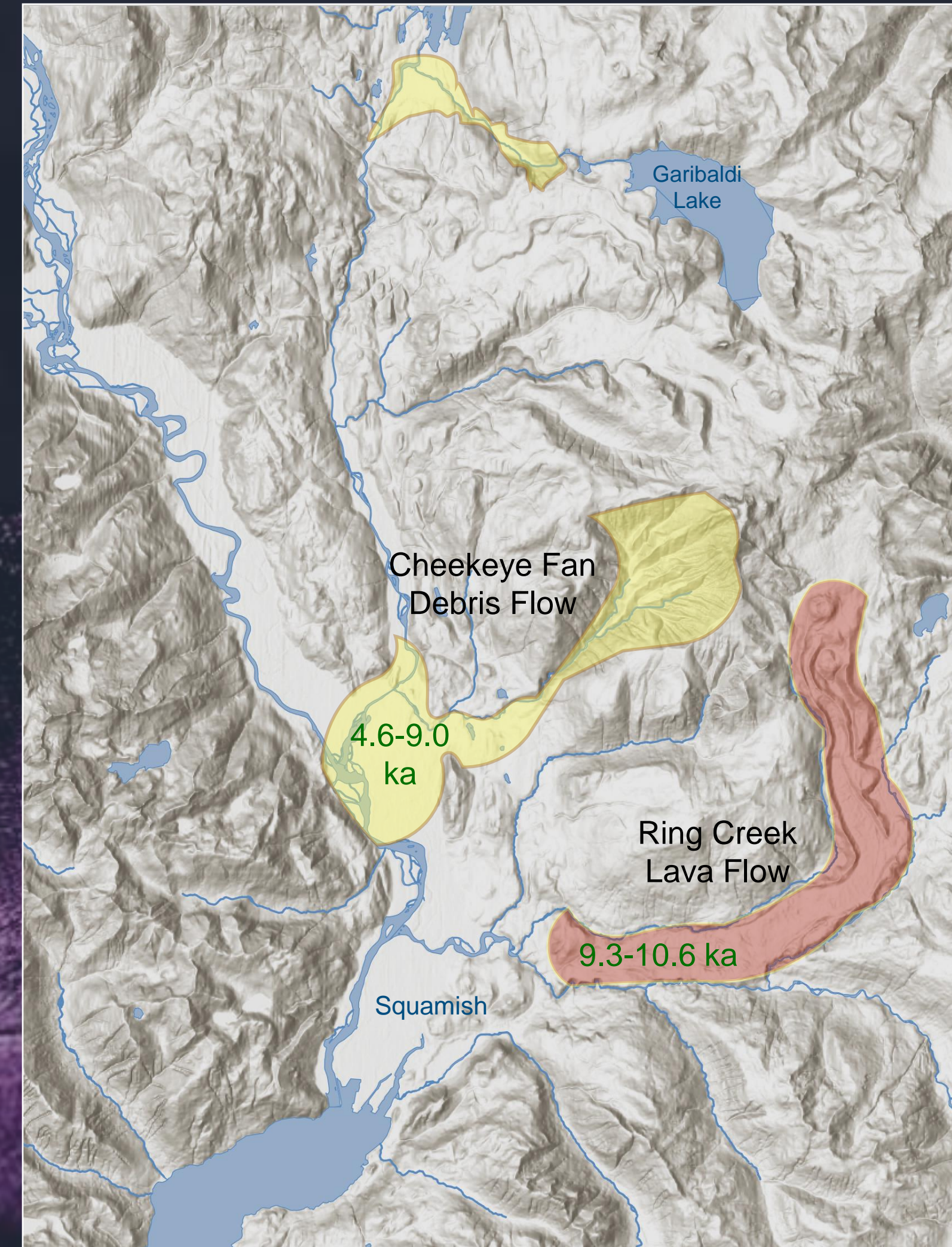


2020 A.D.



5,000 -
8,000 BP
Post-Glacial
Floods

A Collective Memory of deep time and a dynamic landscape



2020 A.D.

4.8 ka

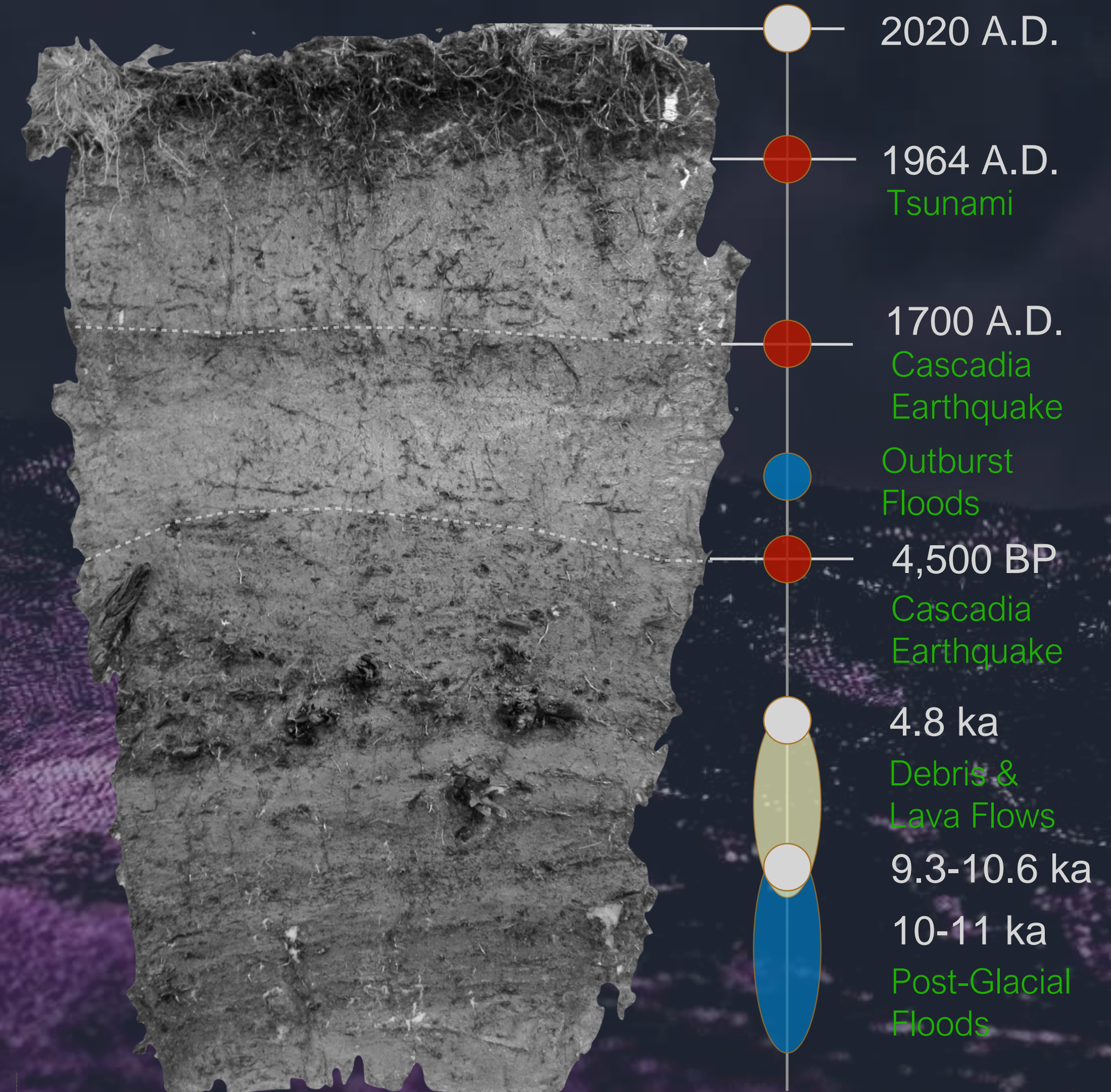
Debris &
Lava Flows

9.3-10.6 ka

10-11 ka

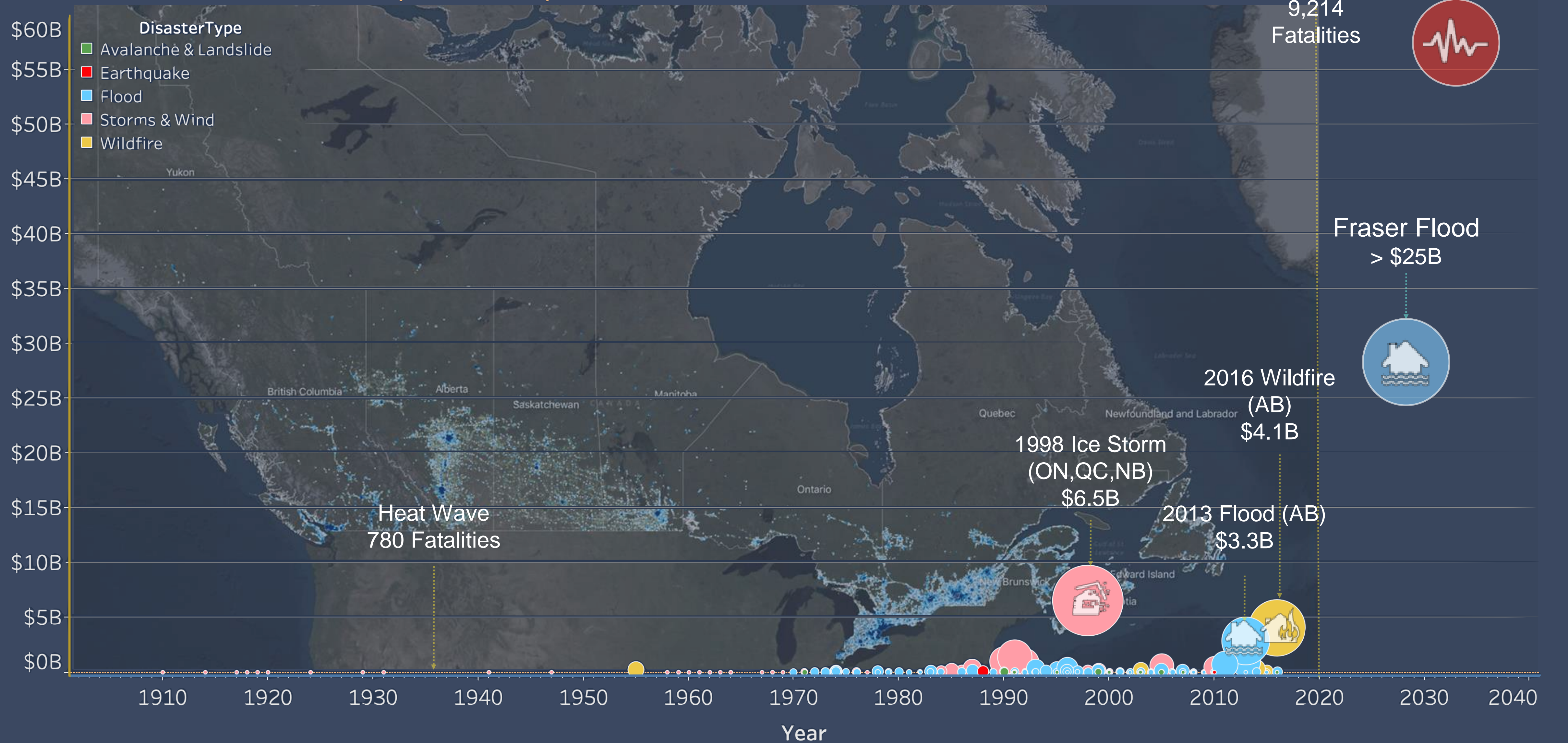
Post-Glacial
Floods

A Collective Memory of deep time and a dynamic landscape



Geologic Record

Disasters in Canada (1900-2040)



"Books about social and ecological change too often leave out a vital component: how do we change ourselves so that we are strong enough to fully contribute to this great shift? *Active Hope* fills this gap beautifully, guiding readers on a journey of gratitude, grief, interconnection, and, ultimately, transformation."

— NAOMI KLEIN, author of *The Shock Doctrine*

ACTIVE HOPE

How to
Face the Mess We're in
without Going Crazy

JOANNA MACY &
CHRIS JOHNSTONE

Identify what you hope for and the actions that lead toward a more desirable future

Set goals and targets to help navigate a sustainable path forward

Stage
3

Stage
2

Stage
1

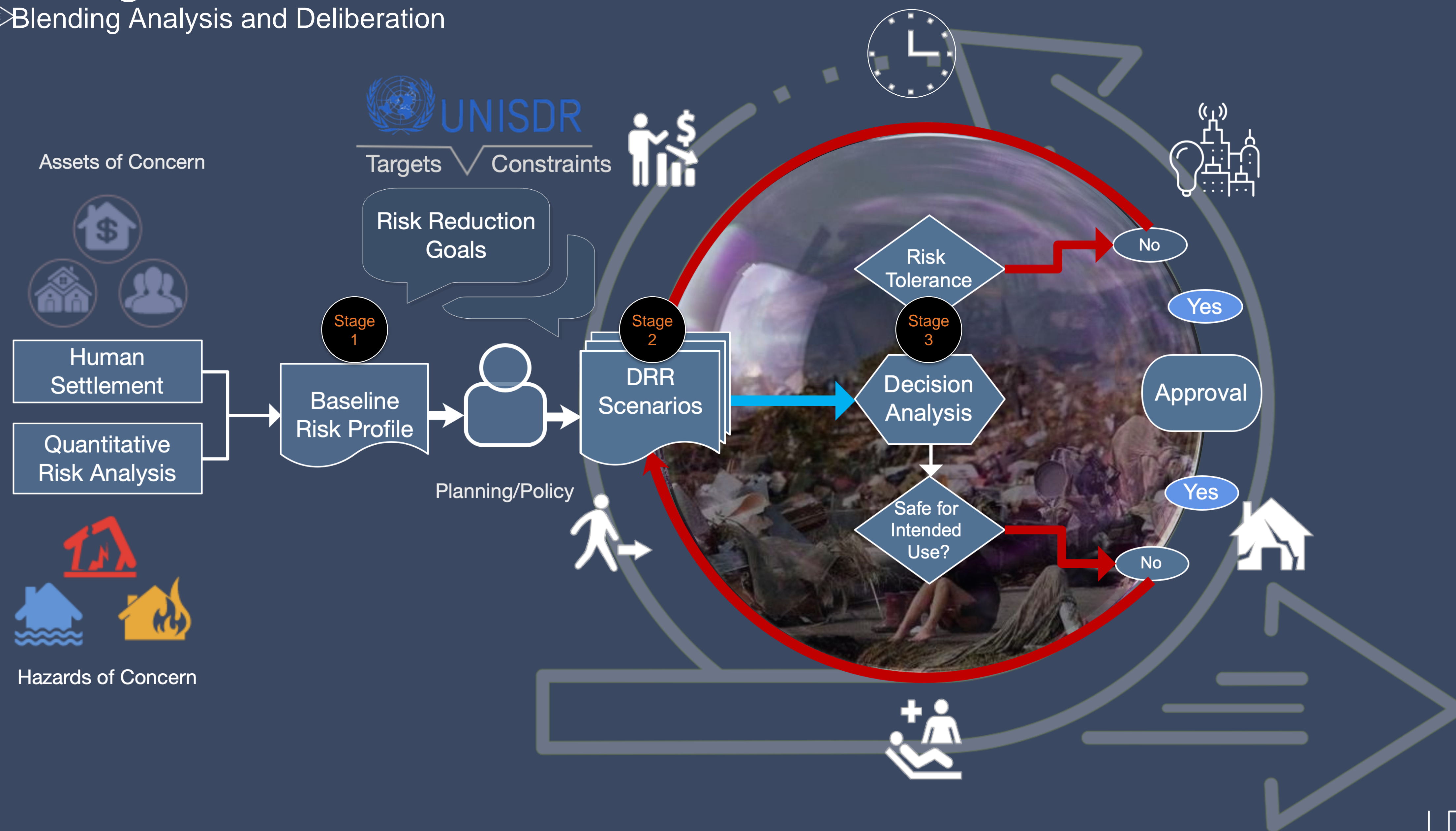
Understand the situation and where you are in the process

Active Hope is a commitment to find and contribute our very best responses to a world in which disaster risk and the promise of sustainability are increasingly elusive.



Integrated Assessment

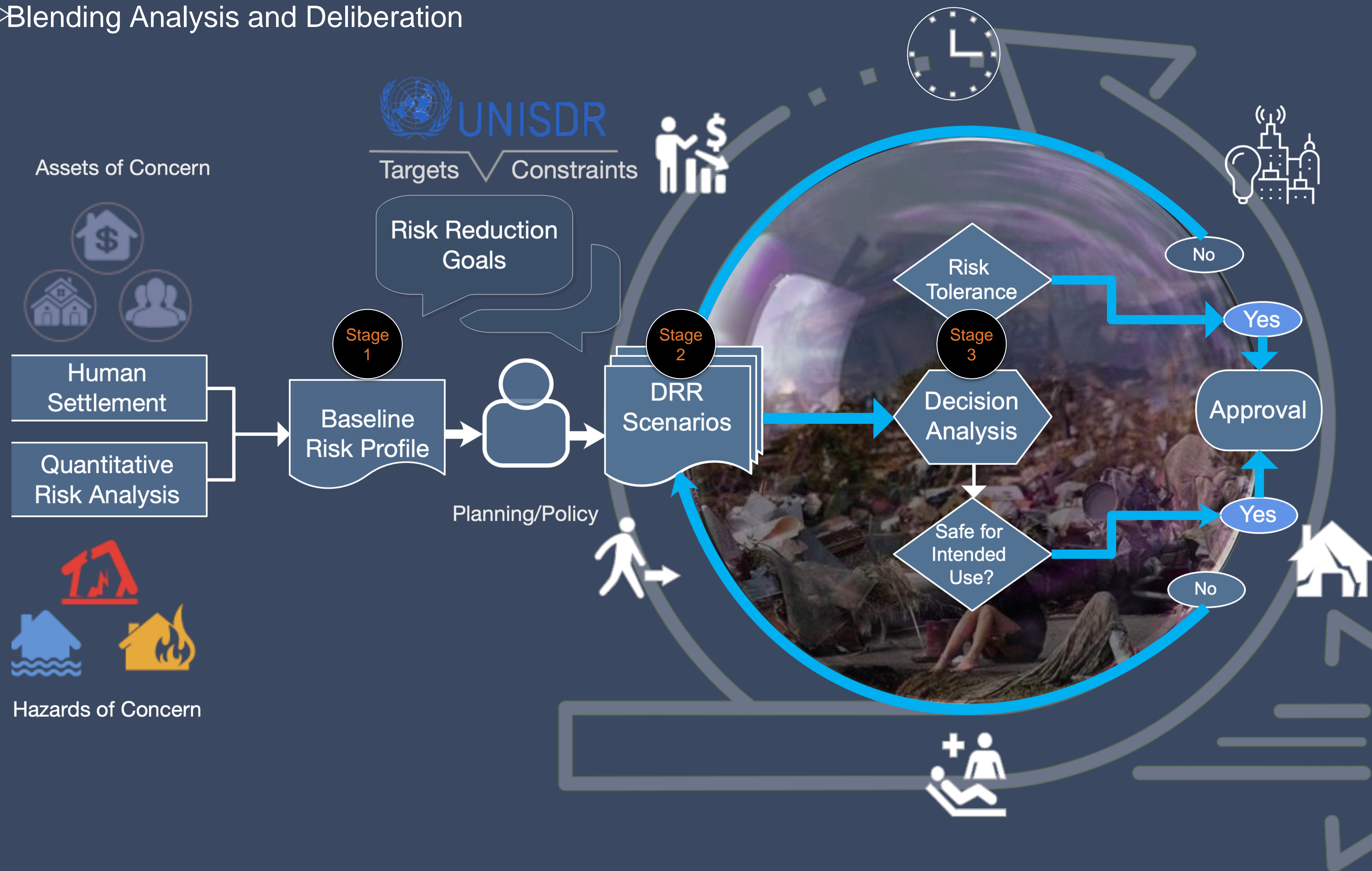
Blending Analysis and Deliberation





Integrated Assessment

Blending Analysis and Deliberation






Integrated Assessment

Blending Analysis and Deliberation

Actors

Type of Participation

Risk Type

<div></div> <h1>Integrated Assessment</h1> <p>Blending Analysis and Deliberation</p>			
		Affected stakeholders	Affected stakeholders
External scientists/researchers	External scientists/researchers	External scientists/researchers	External scientists/researchers
Regulatory bodies/industry experts	Regulatory bodies/industry experts	Regulatory bodies/industry experts	Regulatory bodies/industry experts
Use existing routines to assess risk and the efficacy of possible reduction measures	Increase scientific knowledge and understanding of the risk and mitigation options	Involve all affected stakeholders to collectively decide best way forward	Societal debate about the risk and its underlying implications
Simple	Complex	Uncertain	Ambiguous
			Civil Society

As the dominant characteristics of risk change with place and type of hazard, so too will the level and type of community engagement need to change

Source: International Risk Governance Framework (IRGC, 2006)

THE SENDAI FRAMEWORK OUTLINES SEVEN GLOBAL TARGETS TO BE ACHIEVED BY 2030:

Sendai Framework
(2015-2030)

SUBSTANTIAL
REDUCTIONS

A. Reduce global disaster mortality



B. Reduce the number of affected people globally



C. Reduce direct economic loss in relation to GDP



D. Reduce disaster damage to critical infrastructure and disruption of basic services



E. Increase the number of countries with national and local disaster risk reduction strategies



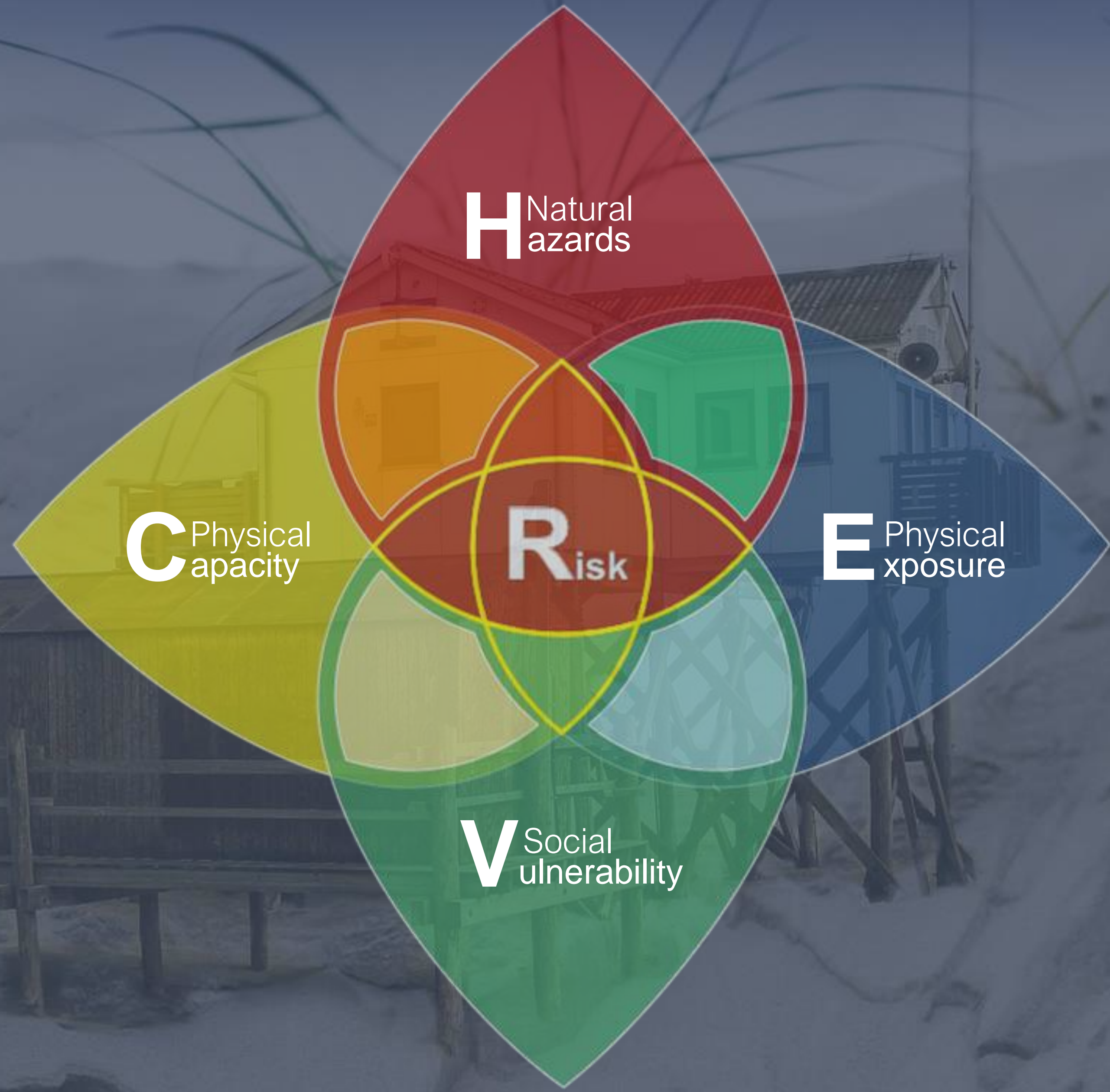
F. Substantially enhance international cooperation to developing countries

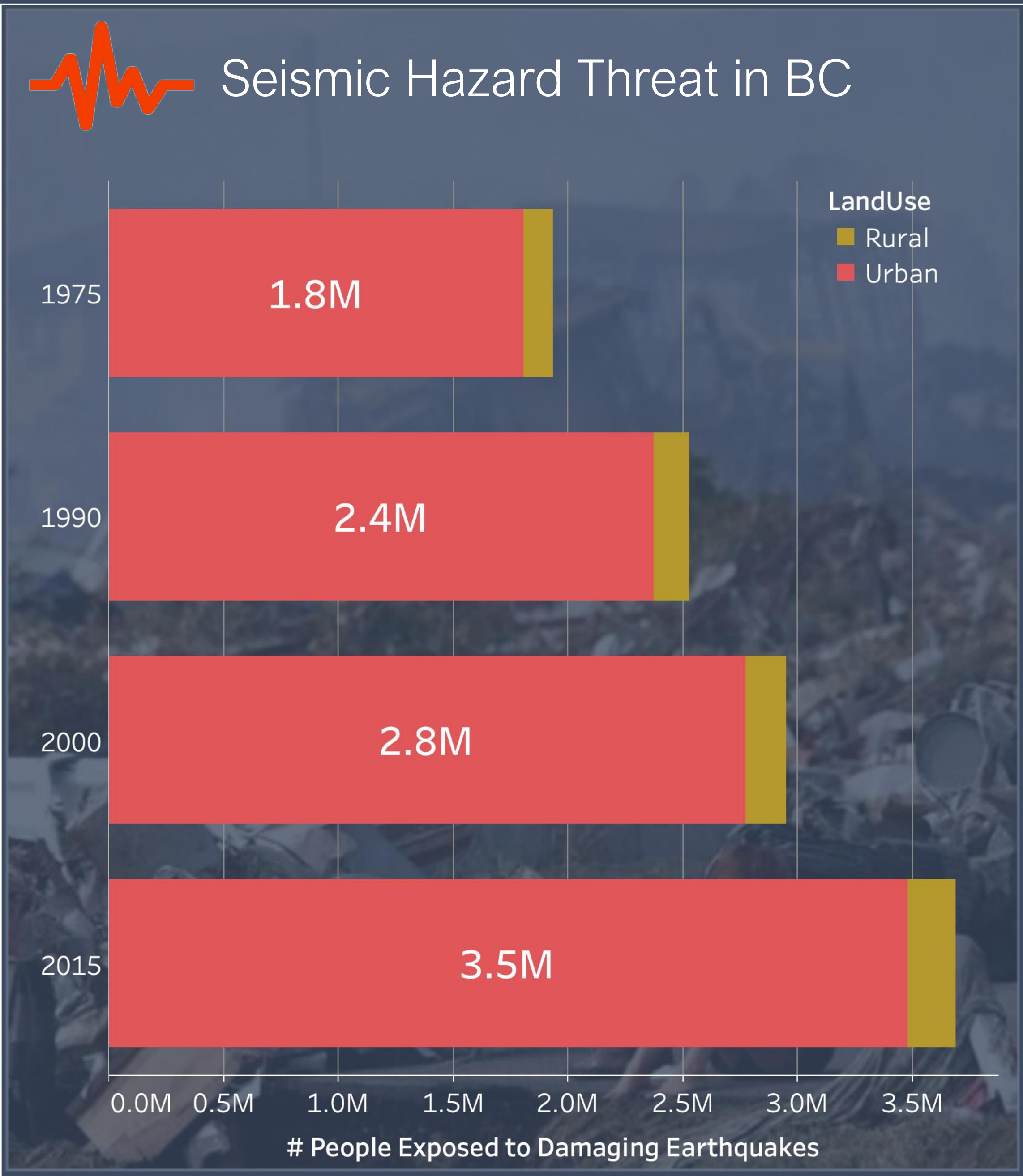
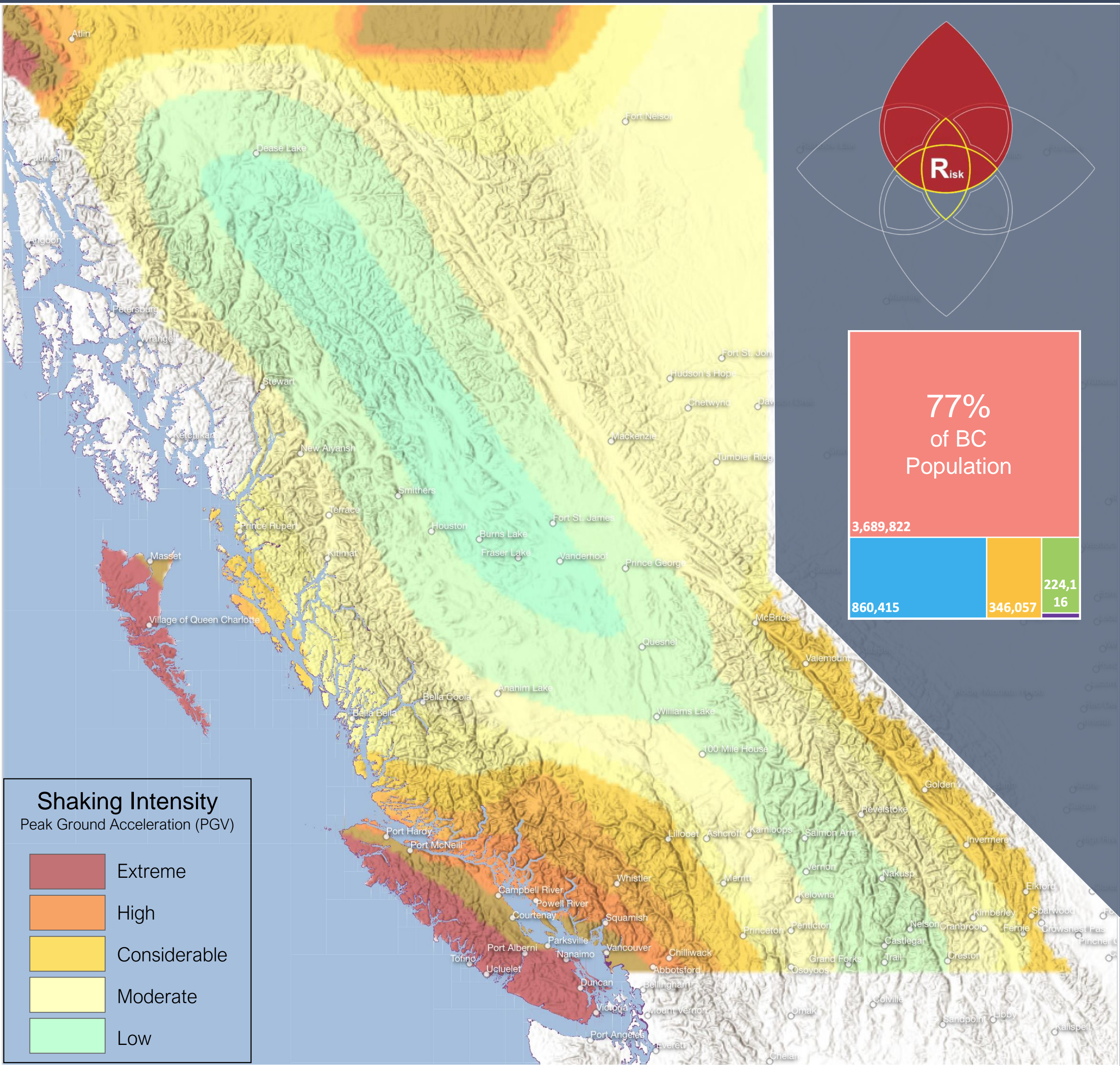


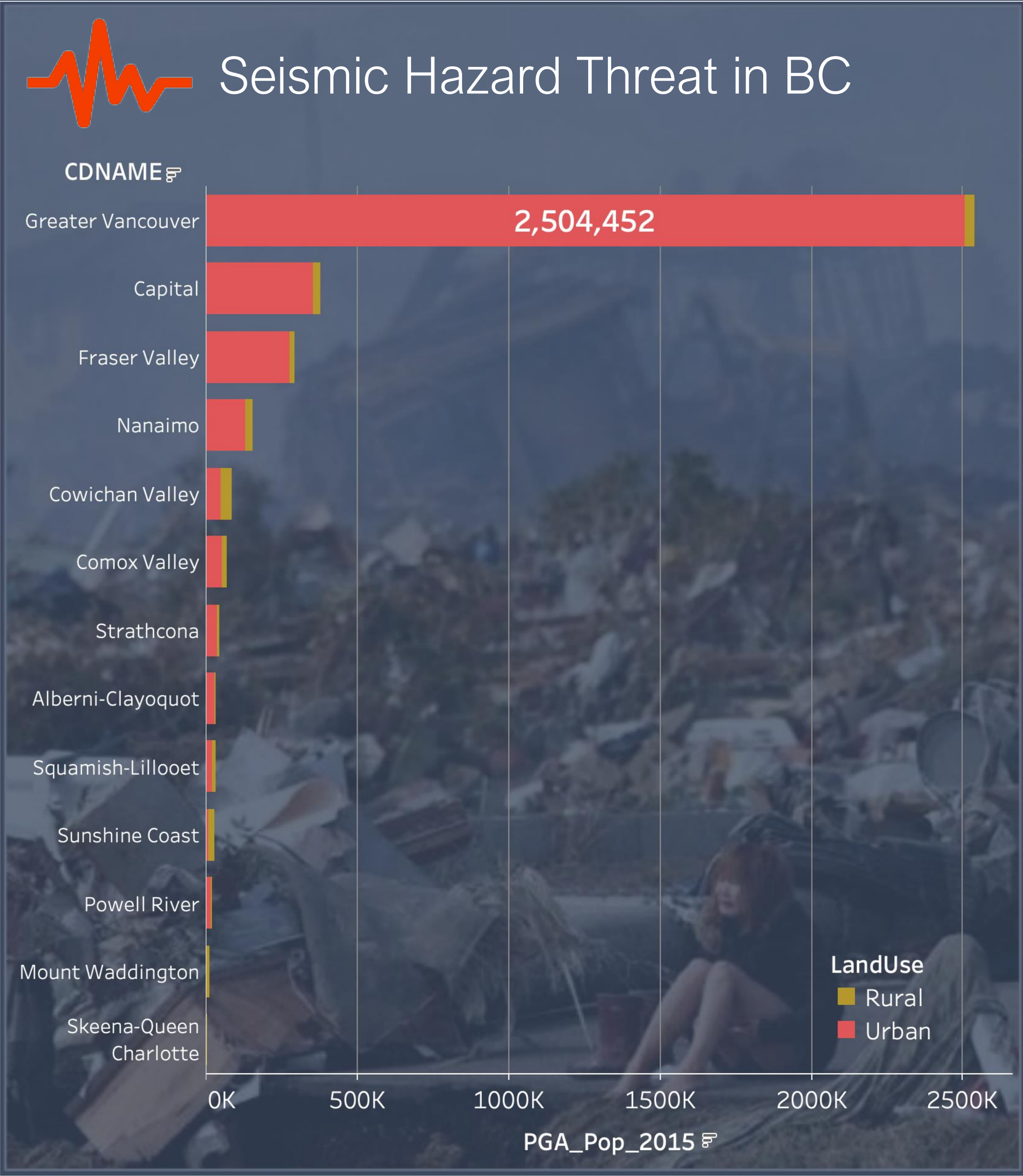
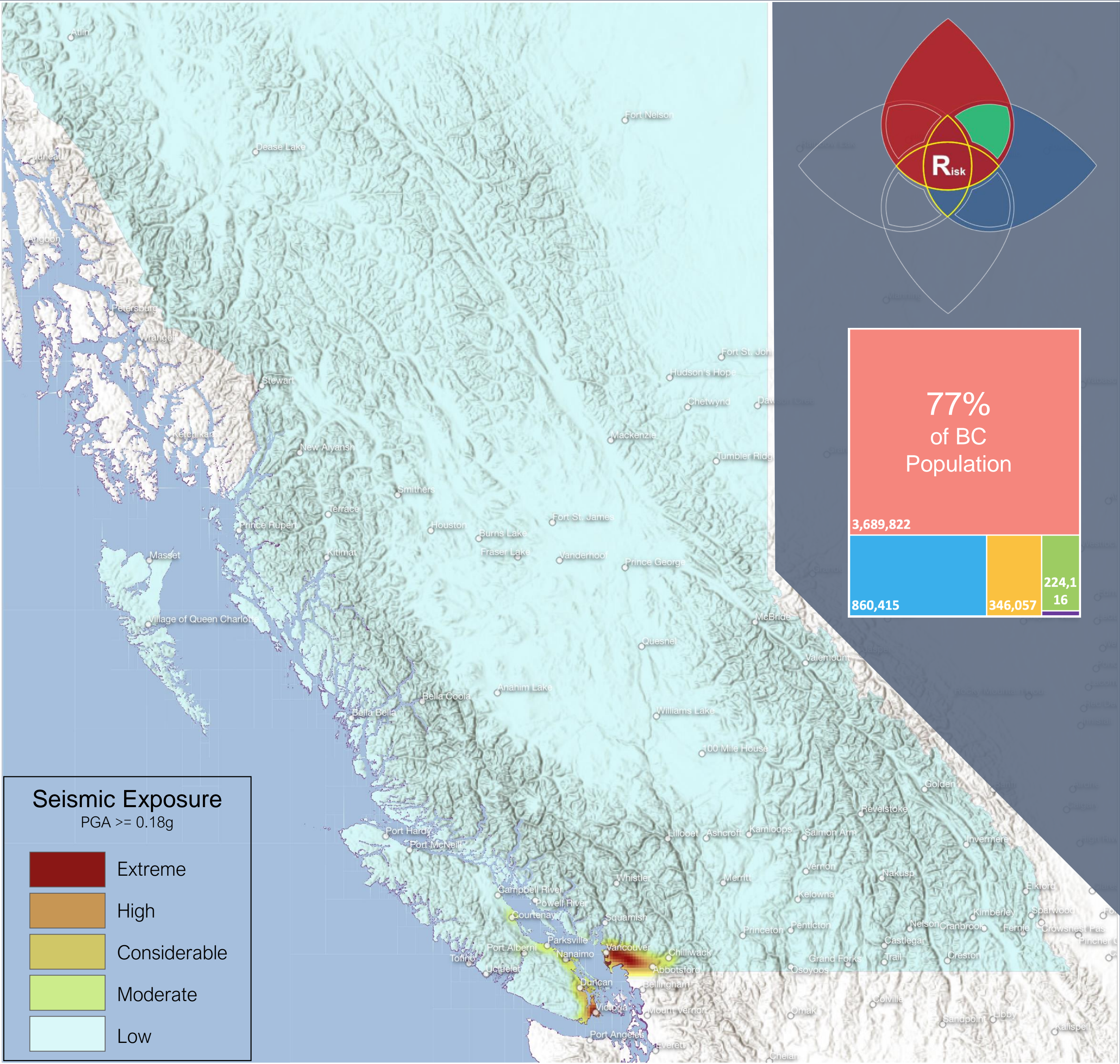
G. Increase the availability of and access to multi-hazard early warning systems

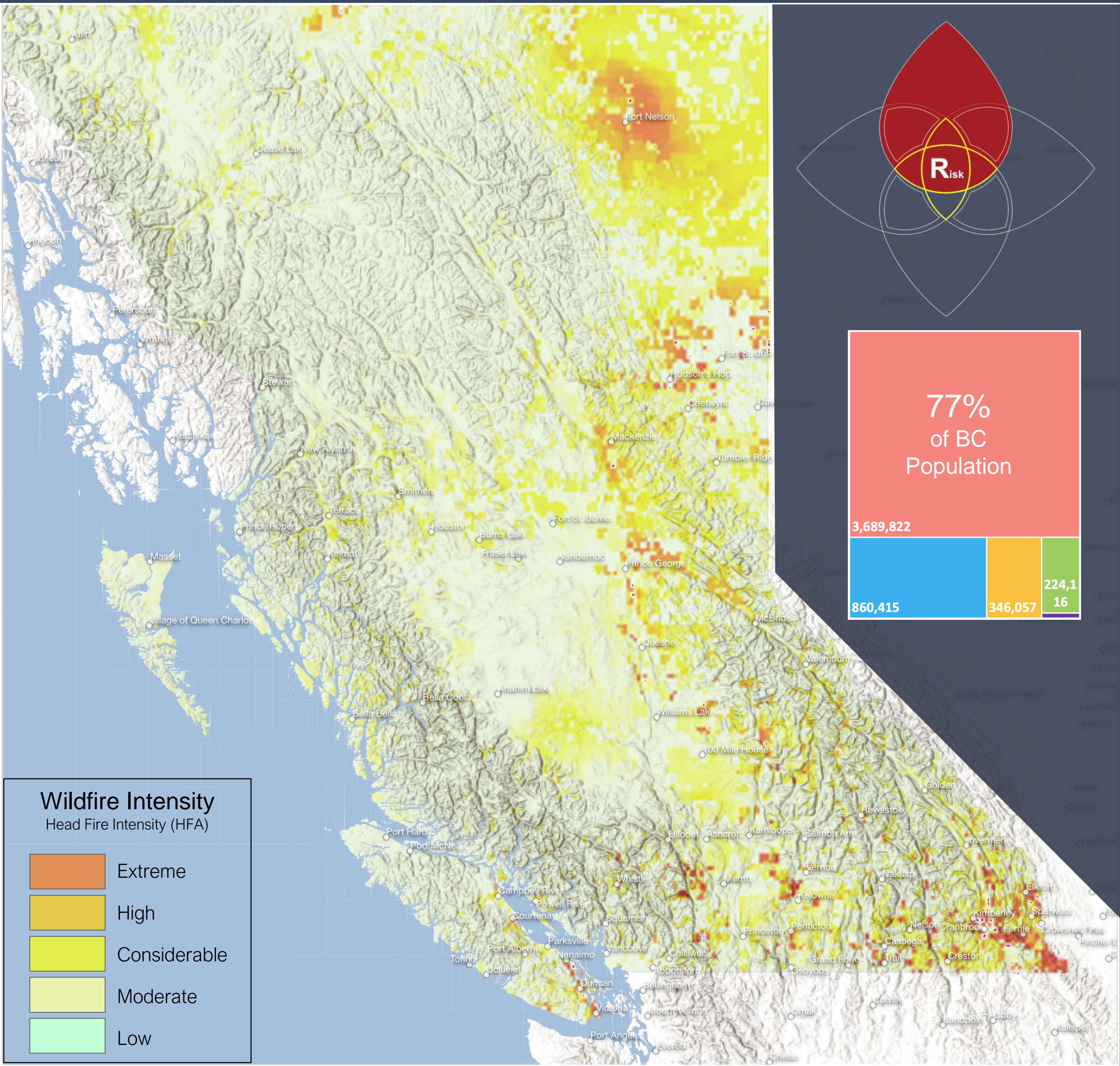


SUBSTANTIAL
INCREASES









Wildfire Hazard Threat in BC

FirePop-1975

201.8K

FirePop-1990

235.2K

51.0K

FirePop-2000

254.8K

55.0K

FirePop-2015

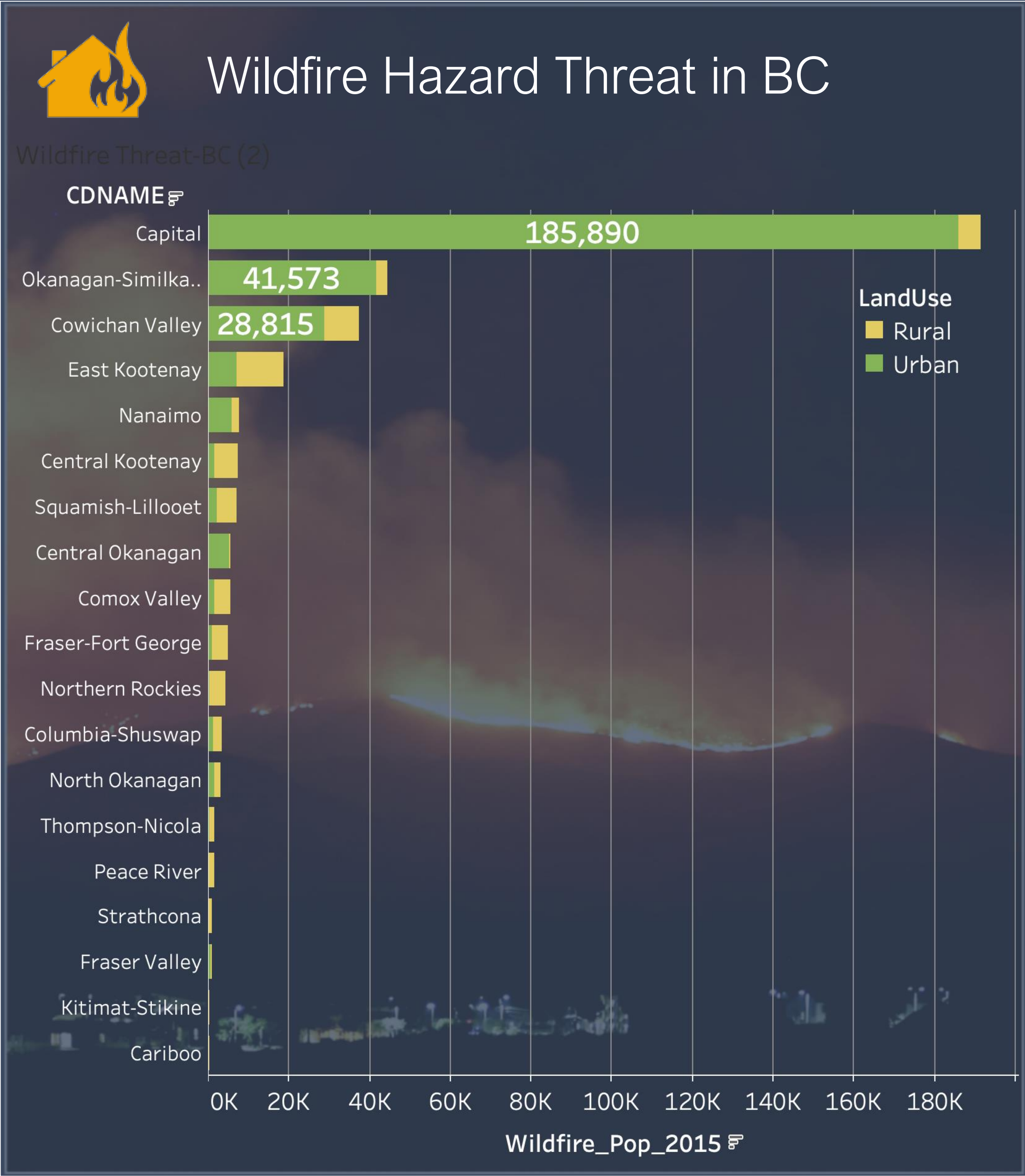
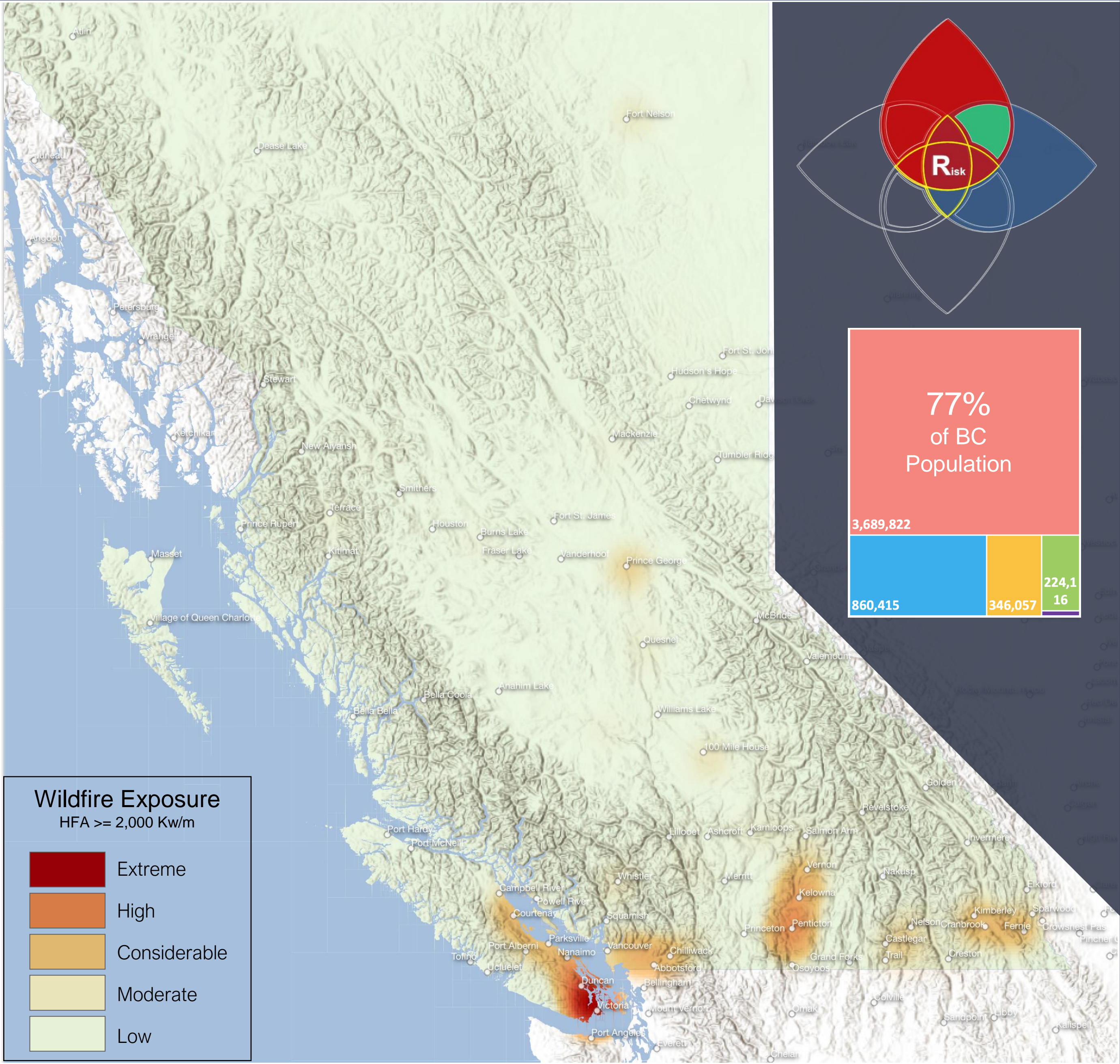
284.5K

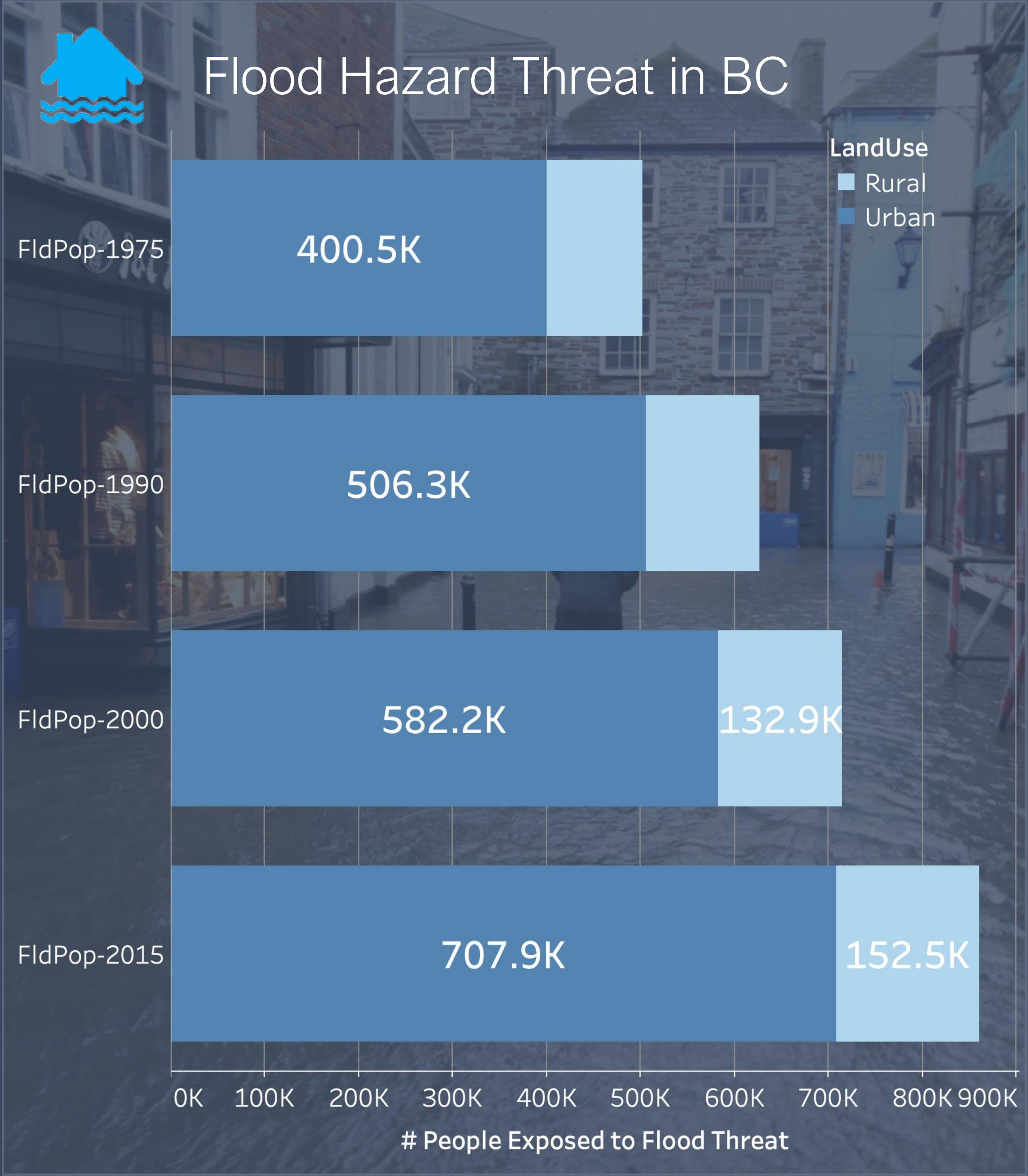
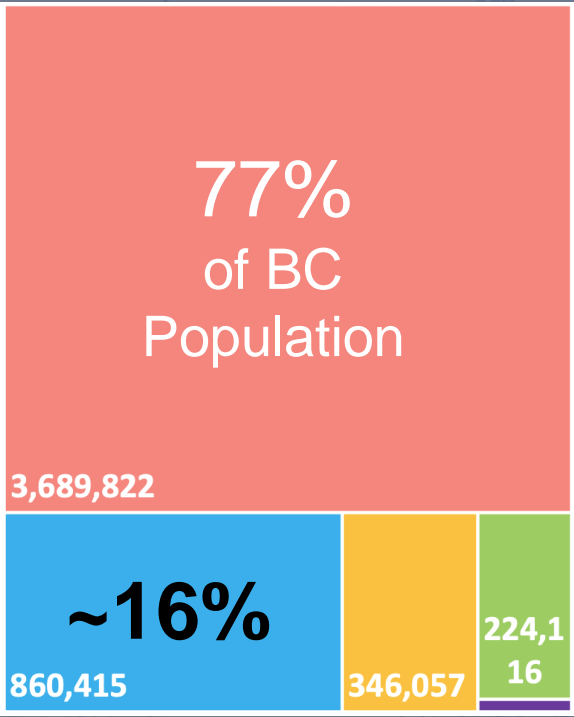
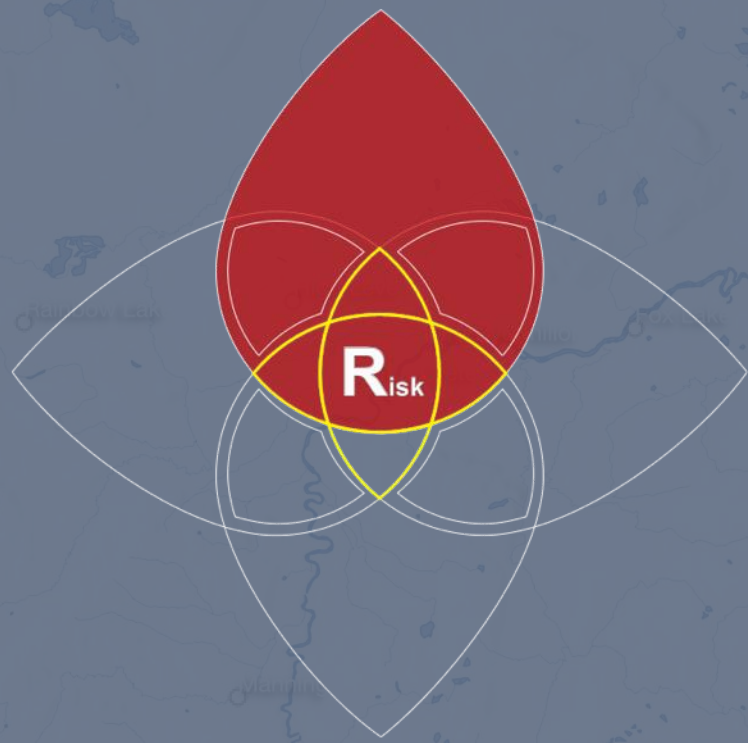
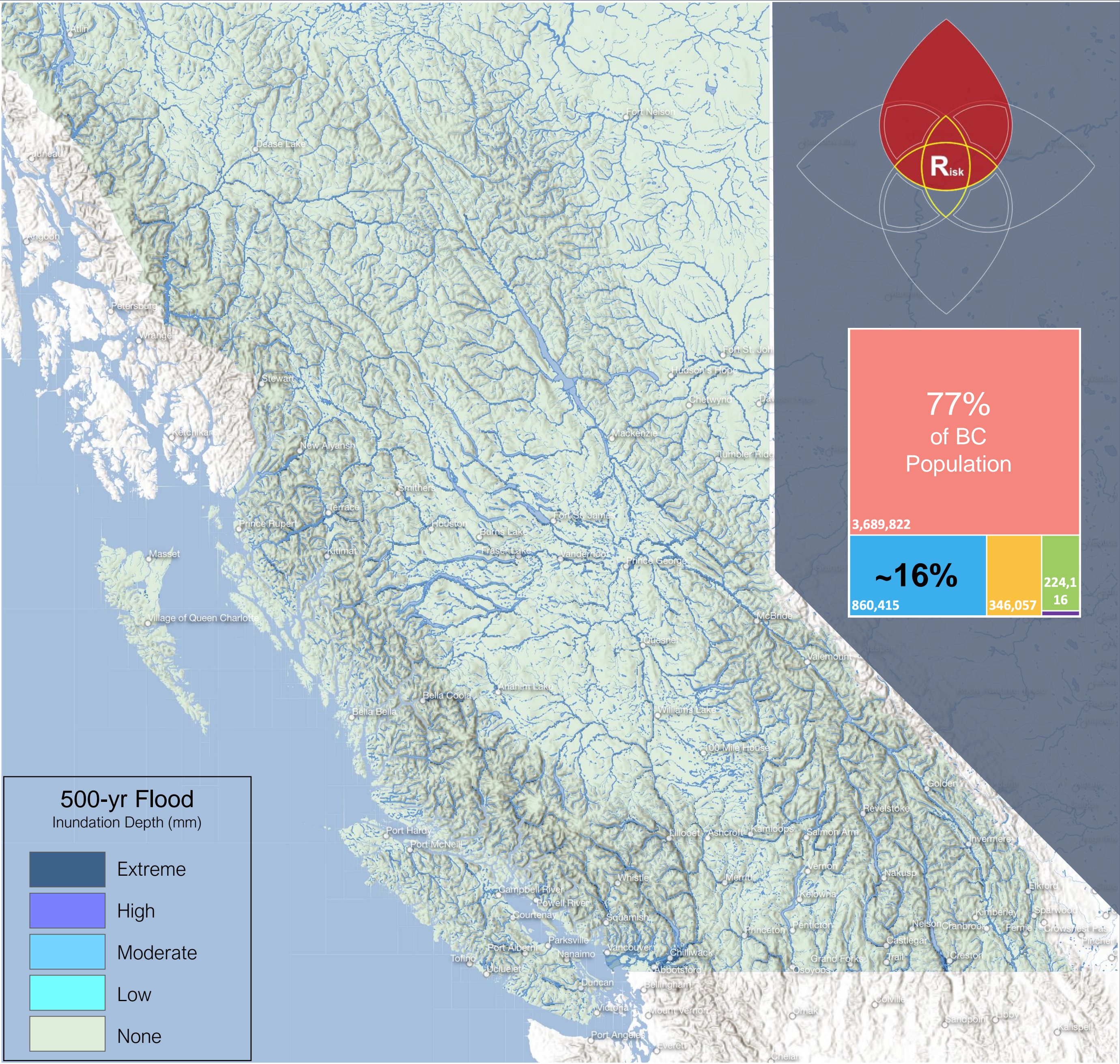
61.6K

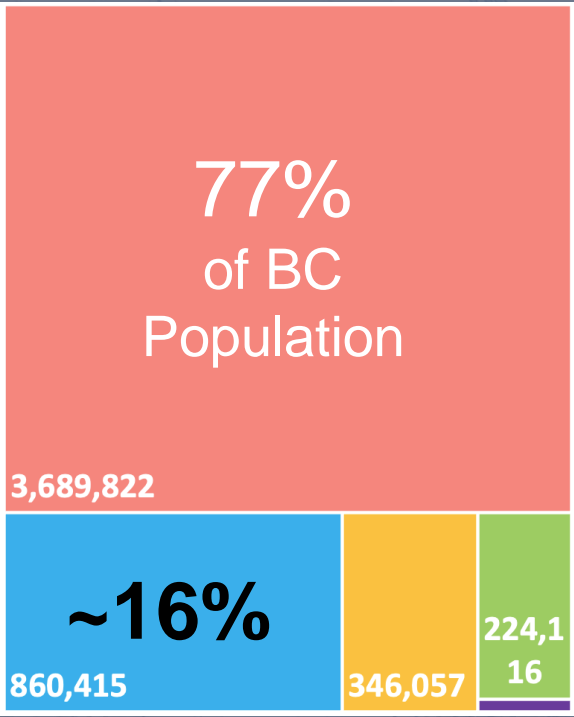
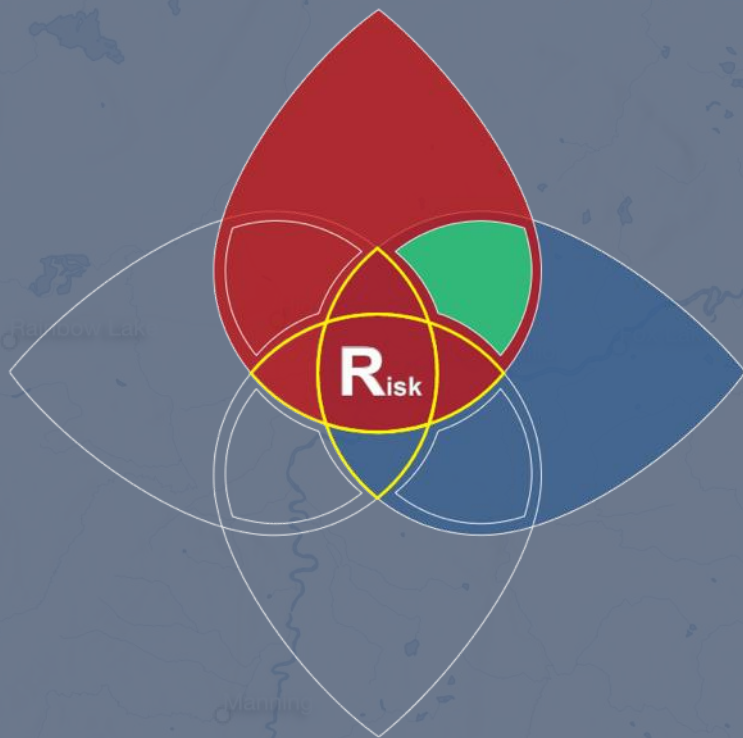
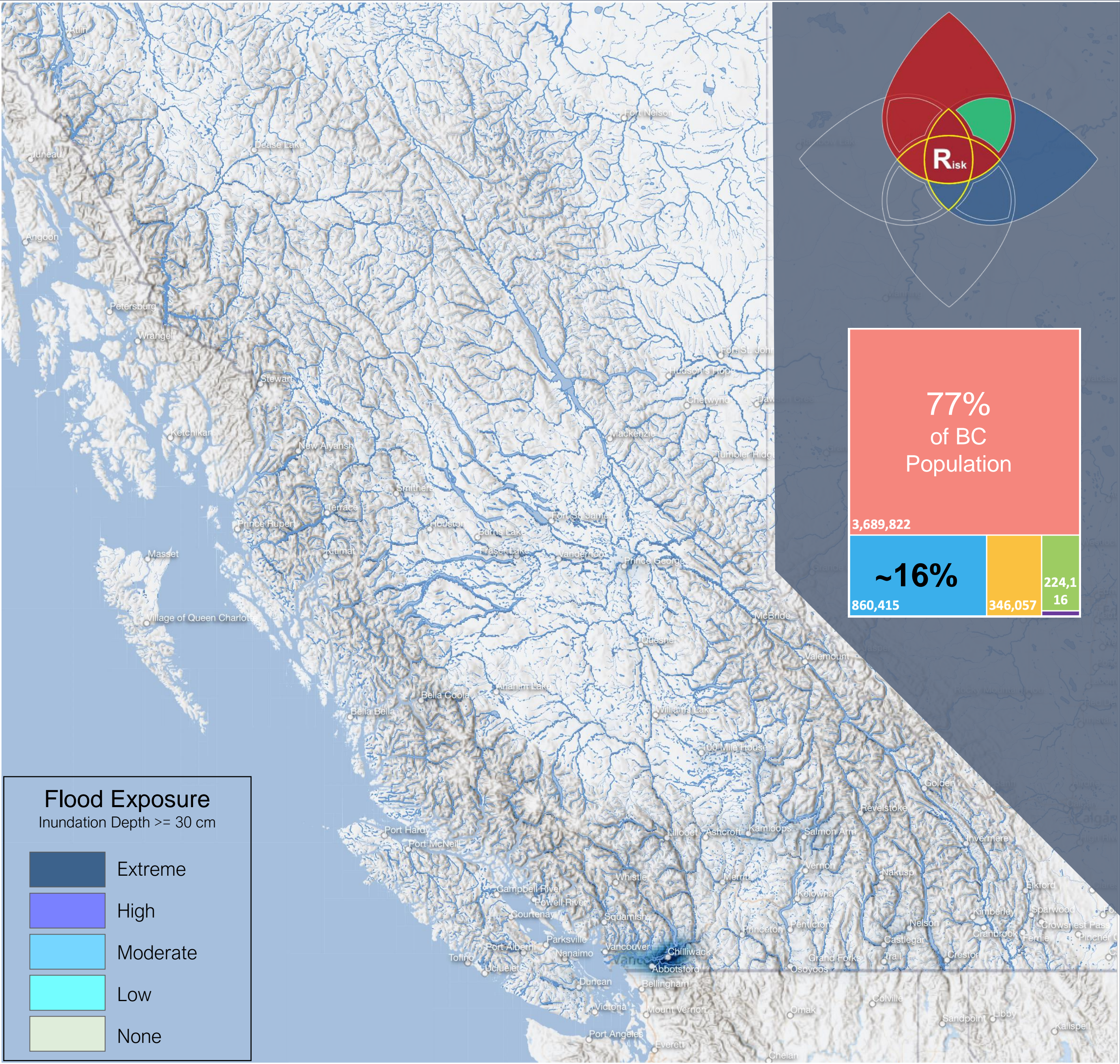
LandUse
Rural
Urban

0K 50K 100K 150K 200K 250K 300K 350K

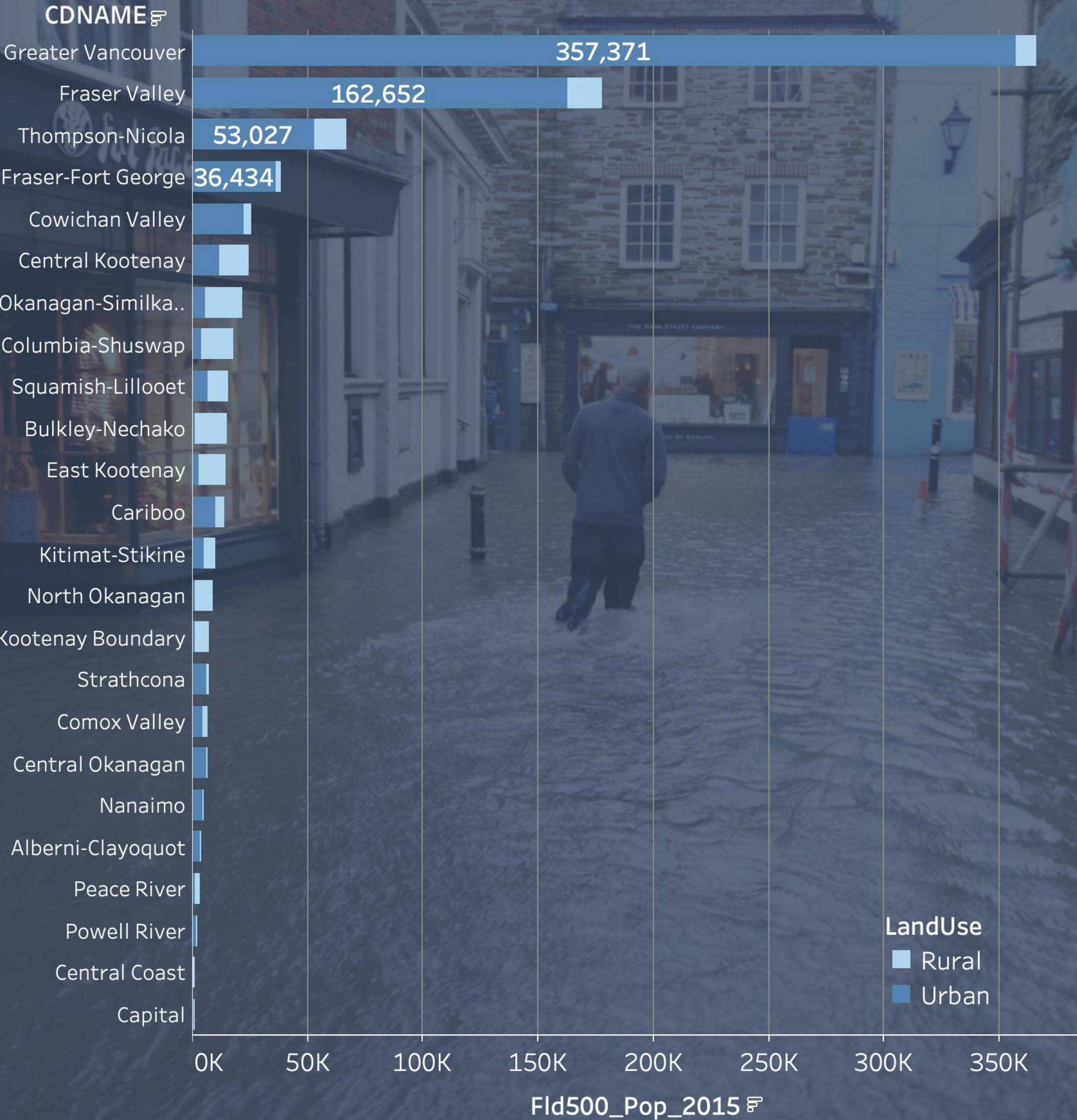
People Exposed to WildFire Threat







Flood Hazard Threat in BC



Navigating Pathways of Disaster Resilience in BC

